



THE EXCHANGE

NIAGARA FALLS

VENUE RENTAL PACKAGE



X
THE EXCHANGE

CAFE



THE EXCHANGE

After years of planning, Niagara Falls City Council approved the construction of the Niagara Falls Exchange, a new market and cultural hub, strategically located in the Main and Ferry neighbourhood.

The Exchange is a 10,000 square foot indoor/outdoor multipurpose event space featuring a market, café, artist & woodworking studios, an art gallery and more.

The Exchange, set to open in 2023, will be a popular event space in Niagara Falls and the epicentre of the City's arts & culture scene.







NIAGARA FALLS HISTORY MUSEUM

This award-winning facility is housed in the original Stamford Township Hall, constructed in 1874.

In 2012, the building was fully restored and expanded by world renowned architects Moryama and Teshima.

The Museum houses three galleries with exhibits on Niagara Falls history and beyond, a state-of-the-art theatre/meeting space and a private outdoor courtyard.

Your guests will love this unique space that pays homage to the past, with the modern touches and features needed to make your event a memorable success.

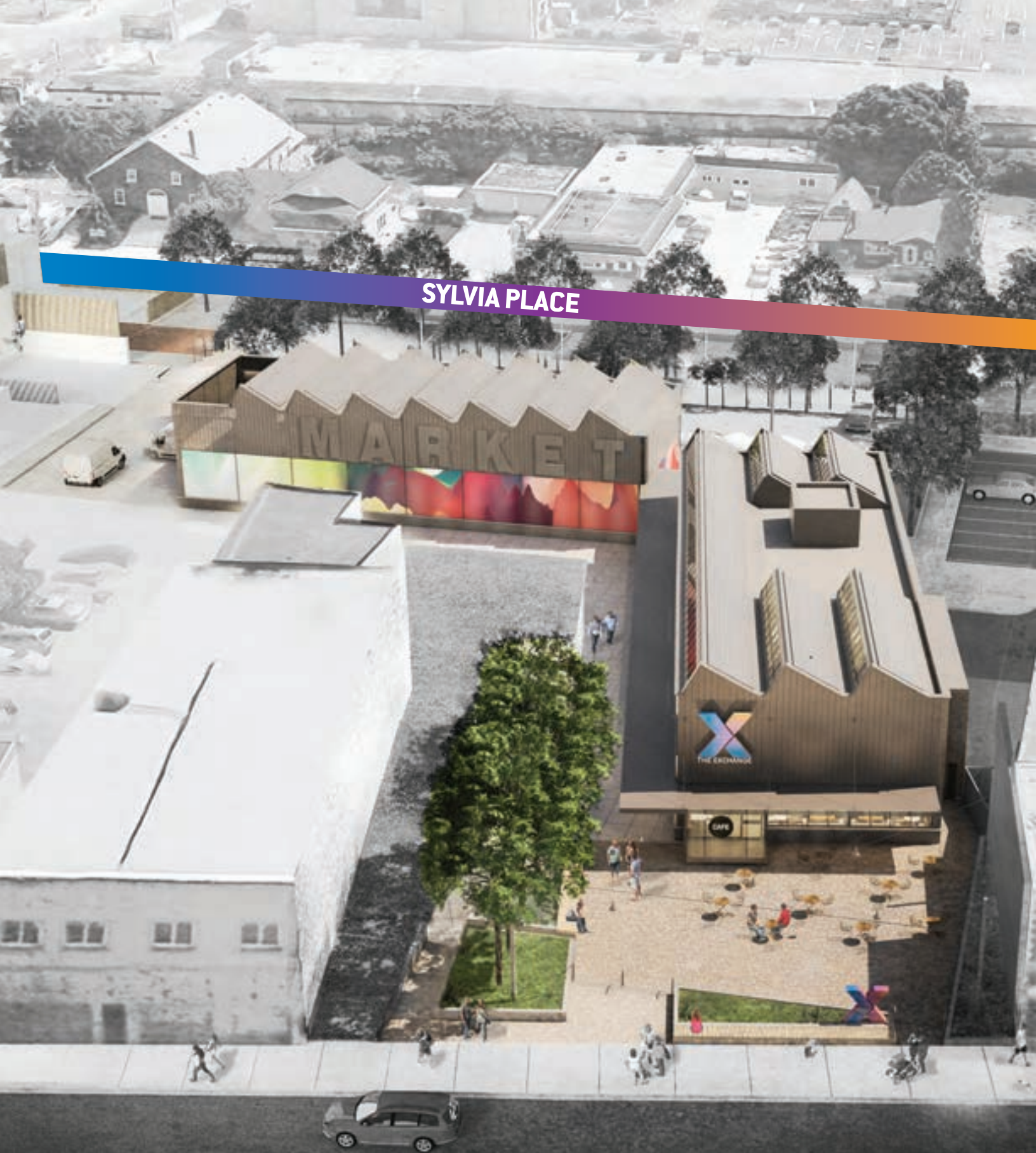


LOCATION

Located in the historic Main & Ferry area, adjacent to the Niagara Falls History Museum. The site is knit together with a design language that prioritizes an accessible public realm and creates quality indoor & outdoor space that is flexible & sustainable.



SYLVIA PLACE



MAIN STREET





HOST YOUR NEXT EVENT AT THE EXCHANGE.



THE EXCHANGE FEATURES FOUR, UNIQUE SPACES TO HOST YOUR NEXT EVENT!

- » Social & corporate events
- » Creative workshops & learning seminars
- » Receptions & cocktail hours
- » Live music
- » Weddings
- » Performances
- » Rehearsals
- » Banquets
- » Conferences
- » Festivals
- » Vendor events
- » Private parties

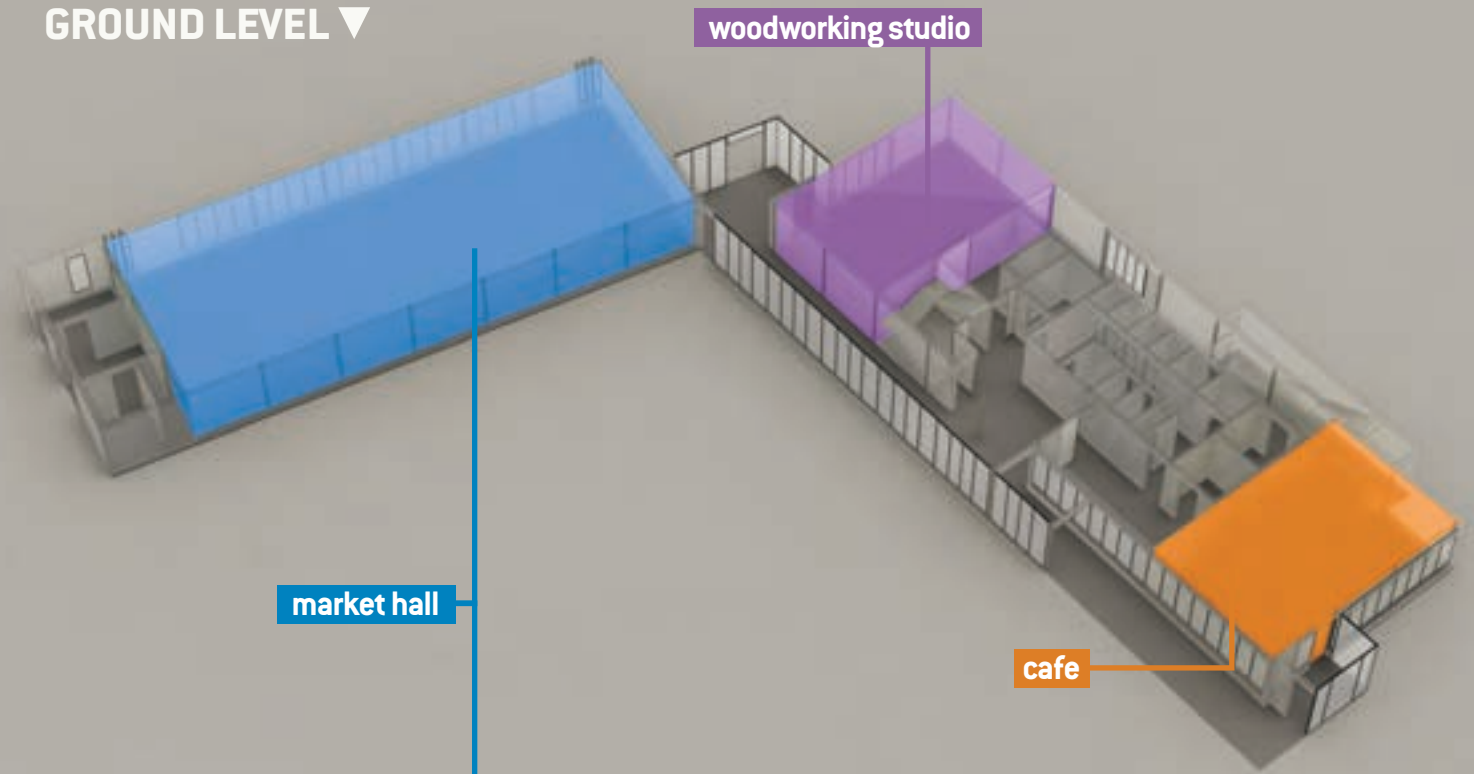




AT THE EXCHANGE.

FLOOR PLAN

GROUND LEVEL ▼

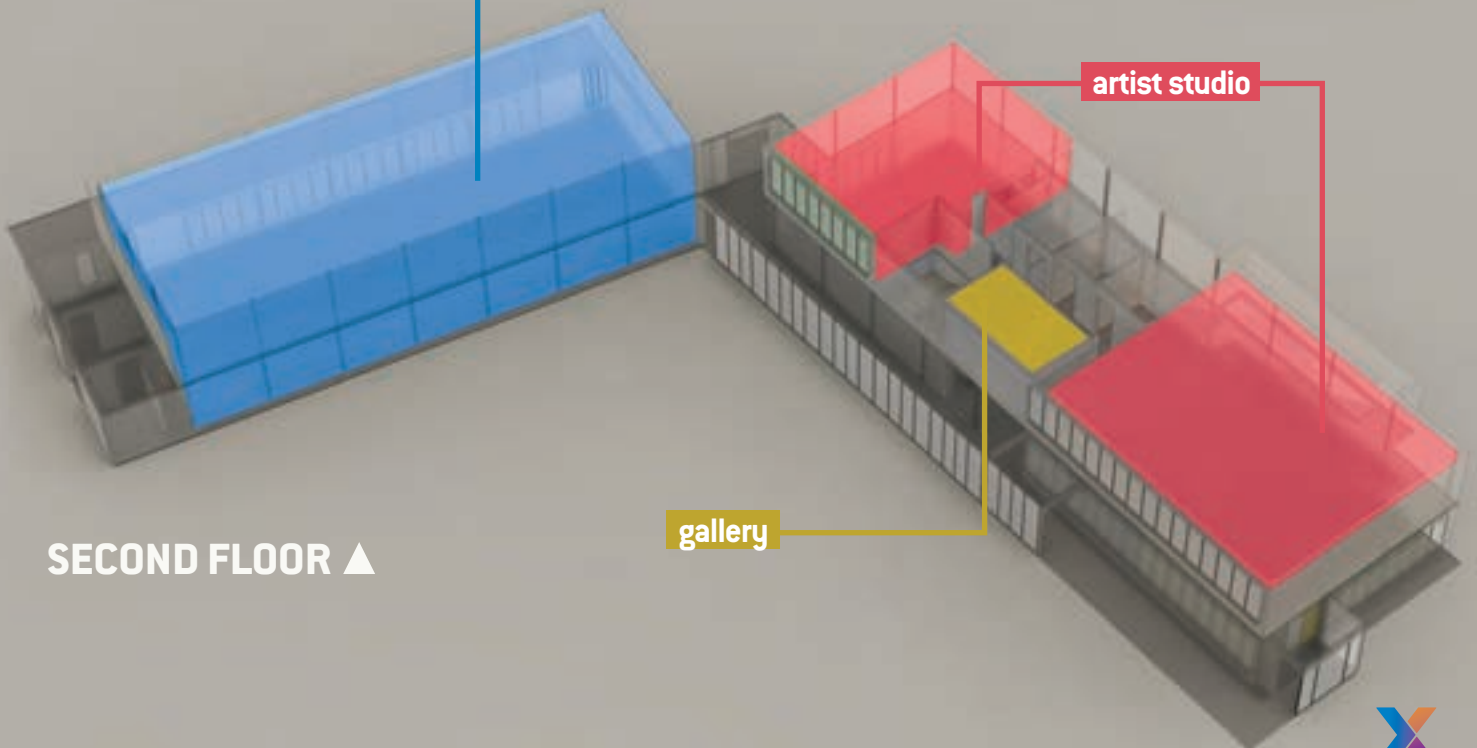


market hall

woodworking studio

cafe

SECOND FLOOR ▲



artist studio

gallery





THE MARKET HALL

The centrepiece of The Exchange, The Market Hall is a 3,300 square foot multi-purpose event space designed to host larger scale events. A daily rental of the Market Hall on Saturday will start at 3:00 pm.

	regular hours	after hours before 8AM / after 9PM
COMMUNITY MAKERS RATE	\$50 per hour	\$100 per hour
RENTAL RATE	\$75 per hour	\$125 per hour
ADDITIONAL: INDOOR STAGE RENTAL	\$135 per hour (3hr minimum)	

HALL CAPACITY	HALL DIMENSIONS
<ul style="list-style-type: none"> » seated: 225 » banquet: 145 - 180 » standing: 300 	<ul style="list-style-type: none"> » 36 ft x 91 ft » 3,300 sqft

FEATURES & AMENITIES:

- » Two storey high ceilings with skylights
- » All windows have blinds for reduced exterior light intrusion when needed
- » 11.8 ft x 6.6 ft video wall at north side of room – 16:9 ratio
- » Two video monitors on west side of room
- » High speed WiFi
- » Sound system capabilities for most performances, events, lectures, theatres and event programming needs, featuring user-friendly touch screen interface
- » Staging available for events (eight 4'x6' modular risers with skirting, ramp and stairs)
- » Built-in two-camera set up for live streaming/broadcasting
- » Fully accessible
- » Ability to liquor license



THE GALLERY

A unique event space that showcases the art of The Exchange's resident artists.

FEATURES & AMENITIES:

- » Intimate setting that lends itself to small hosting or performance opportunities
- » Ability to liquor license

	per hour	GALLERY CAPACITY	GALLERY DIMENSIONS
COMMUNITY MAKERS RATE	\$12.50	<ul style="list-style-type: none"> » seated: 15 » standing: 30 » workshop: 10 	<ul style="list-style-type: none"> » 17 ft x 11 ft » 190 sqft



THE WILMA MORRISON COURTYARD

An open-air courtyard ideal for gatherings and performances. The courtyard is available to be liquor licensed with access to power.

FEATURES & AMENITIES:

- » Paved surface
- » Outdoor power
- » Ability to liquor license
- » Indoor outdoor audio
- » Intimate space for small performances
- » High speed WiFi

	regular hours	after hours before 8AM / after 9PM
COMMUNITY MAKERS RATE	\$30 per hour	\$50 per hour
RENTAL RATE	\$50 per hour	\$75 per hour



THE HISTORIC DRUMMONDVILLE SQUARE

Immerse yourself in art! The Main Street Courtyard features 'The Flock' sculpture and a 115-foot mural, with indoor/outdoor audio and video wall projection capabilities.

FEATURES & AMENITIES:

- » Sunken courtyard
- » Immersed in public art
- » Outdoor projection
- » Fully accessible
- » Overhead atmospheric & pedestrian lighting
- » Hard surface areas for small stages or tents
- » Highly visible from Main Street
- » Ability to liquor license
- » Indoor outdoor audio
- » High speed WiFi

	regular hours	after hours before 8AM / after 9PM
COMMUNITY MAKERS RATE	\$30 per hour	\$50 per hour
RENTAL RATE	\$50 per hour	\$75 per hour

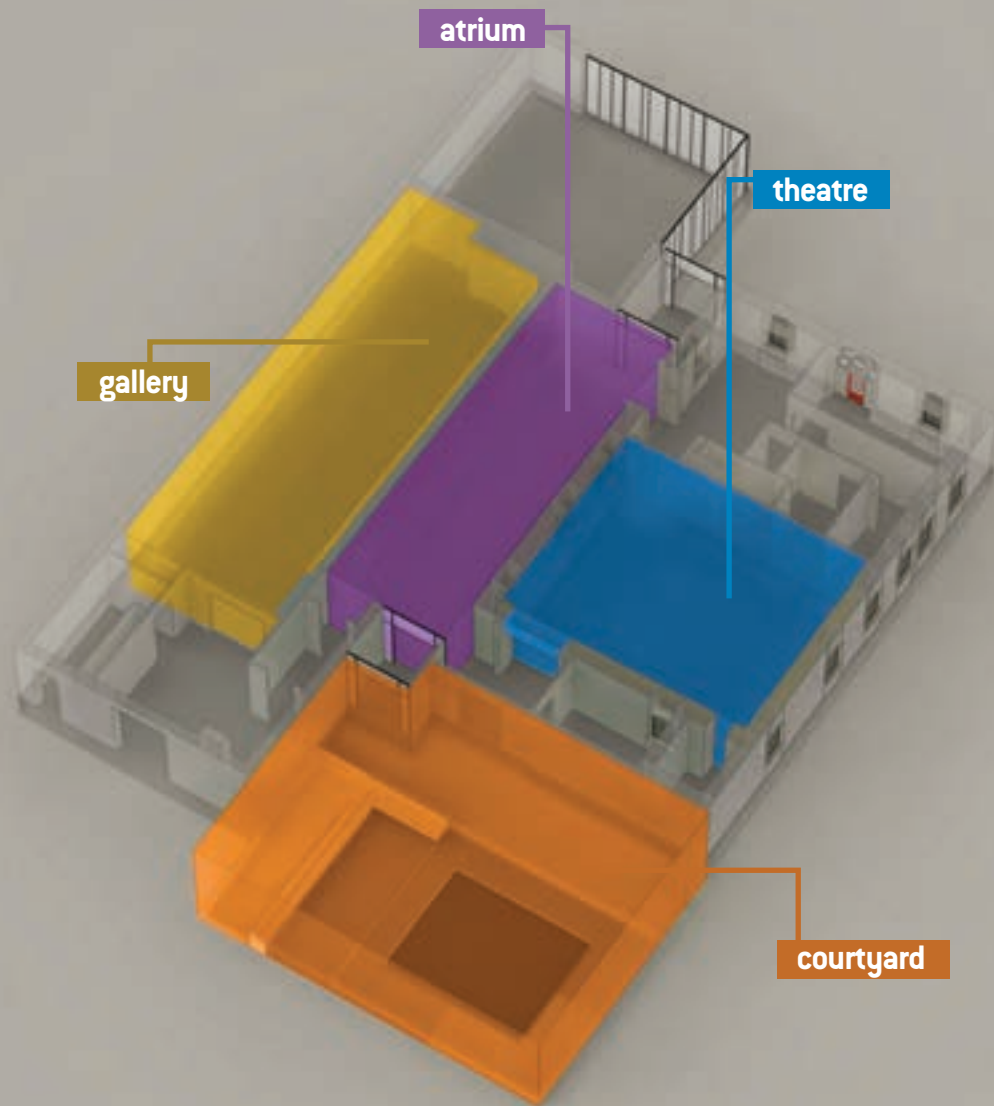




AT THE MUSEUM.

FLOOR PLAN

GROUND LEVEL ▼





THE SHERMAN ZAVITZ THEATRE

A customizable meeting and event space, fully equipped with modern audio-visual equipment, a stage and a projection screen.

	regular hours	after hours before 8AM / after 9PM
COMMUNITY MAKERS RATE	\$30 per hour	\$80 per hour
RENTAL RATE	\$50 per hour	\$100 per hour
THEATRE CAPACITY	THEATRE DIMENSIONS	
<ul style="list-style-type: none"> » Theatre seating: 60 » Meeting seating: 25 	<ul style="list-style-type: none"> » 35 ft x 31 ft » 1,085 sqft 	

FEATURES & AMENITIES:

- » Projection screen (168" screen)
- » Podium
- » Full AV capabilities
- » Acoustic dampening ceiling
- » Tables (17 total, 3' x 3') and chairs
- » Dimming lights
- » Room darkening blinds
- » Coat room
- » DVD & Blu-ray player
- » High speed WiFi
- » Available to be liquor licensed



NIAGARA FALLS HYDRO CORPORATION COURTYARD

An open courtyard with raised stage, ideal for smaller outdoor events and performances.

FEATURES & AMENITIES:

- » Private, fenced in patio space
- » Elevated stage for performances
- » Access to electricity
- » Access to washrooms
- » Ambient lighting for evening events
- » Available to be liquor licensed
- » High speed WiFi

	regular hours	after hours before 8AM / after 9PM
COMMUNITY MAKERS RATE	\$30 per hour	\$50 per hour
RENTAL RATE	\$75 per hour	\$100 per hour
THEATRE CAPACITY		THEATRE DIMENSIONS
<ul style="list-style-type: none"> » Theatre seating: 50 » Standing: 160 		<ul style="list-style-type: none"> » 40 ft x 43 ft » 1,720 sqft

THE ONTARIO POWER GENERATION EXHIBITION GALLERY

FEATURES & AMENITIES:

- » Located off the main lobby/atrium
- » Available to be liquor licensed
- » Includes current temporary exhibition

GALLERY CAPACITY	GALLERY DIMENSIONS
» Standing: 40	» 65.5 ft x 23.5 ft » 1,500 sqft



GALE FAMILY WAR OF 1812 GALLERY

FEATURES & AMENITIES:

- » Located off the Atrium
- » Available to be liquor licensed
- » Includes War of 1812 exhibition with interactive components

GALLERY CAPACITY	GALLERY DIMENSIONS
» Standing: 40	» 31 ft x 28 ft » 868 sqft

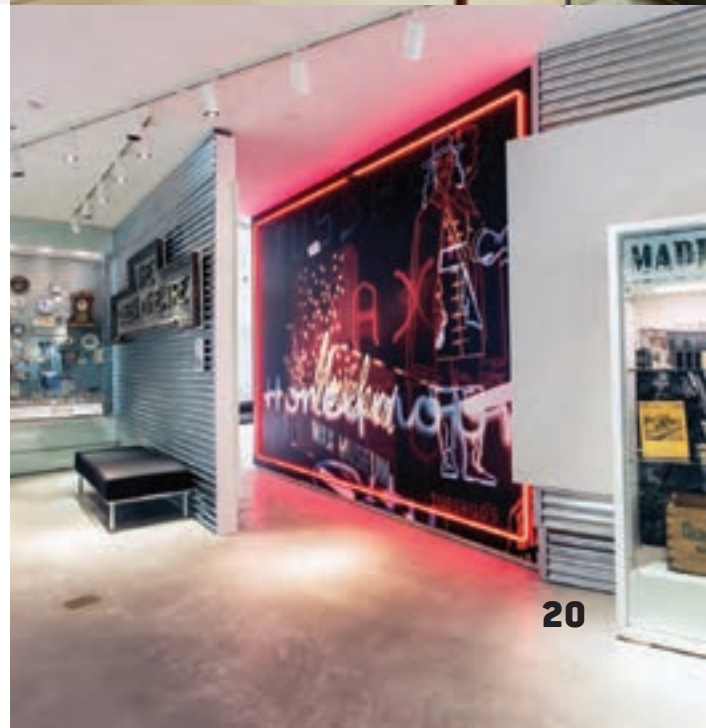


NIAGARA FALLS COMMUNITY GALLERY

FEATURES & AMENITIES:

- » Located on the 2nd storey of the Museum
- » Available to be liquor licensed
- » Includes the Niagara Falls story along with interactive components

GALLERY CAPACITY	GALLERY DIMENSIONS
» Standing: 80	» 65 ft x 23.5 ft » 1,527 sqft



BONUS

BRIGIDIER GENERAL F.B. WEST & FAMILY ATRIUM

Included in all museum rentals.

FEATURES & AMENITIES:

- » Exposed, two-storey brick façade from the Old Stamford Town Hall, built in 1874
- » Ample natural lighting from overhead skylights
- » A/V plug-in for music and audio
- » Performance space for band or live music
- » Available to be liquor licensed

CAPACITY

» Standing: 155

DIMENSIONS

» 60 ft x 18 ft
» 1,100 sqft



GALLERY PRICING:

Access to all three galleries included in price.

	regular hours	after hours before 8AM / after 9PM
COMMUNITY MAKERS RATE	\$30 per hour	\$75 per hour
RENTAL RATE	\$50 per hour	\$100 per hour



LOCAL VENDORS & SUPPLIERS

The Exchange works exclusively with local vendors & suppliers within a 100 mile radius of The Exchange and we encourage you to do the same!



PARKING

- » 65 on-site parking spots, including 7 accessible spaces
- » 90 parking spaces in immediate vicinity of The Exchange
- » 202 total parking spaces (lot and street parking) within a 5 minute walk
- » Bike racks on-site





LET'S TALK.

Do you have questions about hosting your event at The Exchange?

Want to schedule a site visit?

Don't hesitate to reach out!

CLARK BERNAT

Culture & Museums, Manager

cbernat@niagarafalls.ca

(905) 356-7521 ext. 5906

Connect with us / Niagara Falls Exchange



HST is in addition to all rental fees. All prices and information subject to change.





THE EXCHANGE
NIAGARA FALLS

Niagara Falls
CANADA 